

Ranch Plan 1516 – 3 Bedroom Plan At MID TOWN Lafayette

- Three bedroom ranch with open floor plan and volume ceilings
- Third bedroom/study with separate entrance option available
- Upgraded finishes throughout with granite and tile surfaces
- Large lot and two car attached garage
- Full unfinished basement with 9' ceiling and bath rough in



303-665-3847
heronrealty@comcast.net
www.midtownlafayette.com

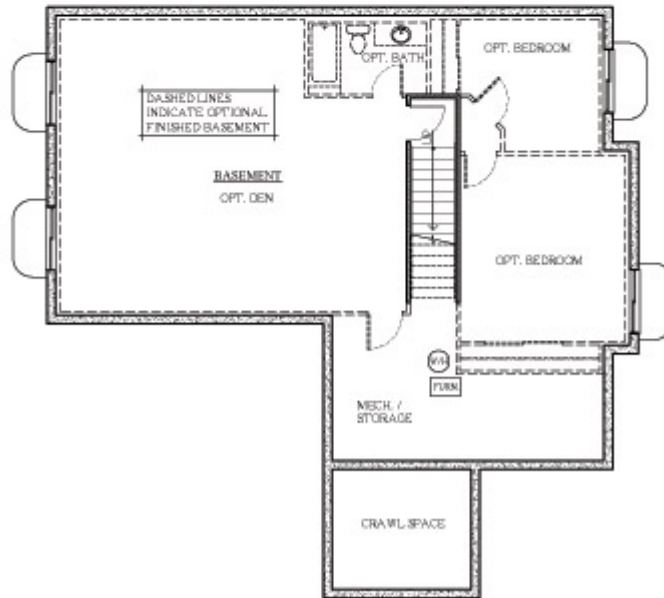
Ranch Plan 1516 at MID TOWN Lafayette

Finished Sq. Ft. - 1516

Total Sq. Ft. - 2887



MAIN LEVEL FLOOR PLAN - 1516 Sq. Ft.



BASEMENT FLOOR PLAN - 1371 Sq. Ft.

In a continuing effort to improve our homes, Von's 31, llc reserves the right to make changes and/or modifications to plans, elevations, specifications, features, colors, and prices without prior notice. Optional upgrades may be shown for illustration purposes.